

brides

New York

113
Reception Sites

476 NEW IDEAS

Dresses! Flowers! Cakes!

What did *that* wedding cost?

REAL COUPLES' BUDGETS

Pretty Bridesmaids

We finally reveal our "secret formula" for the exact right dress

GOT DADDY ISSUES?

Our Dealing With Dad Handbook

(**PLUS** a speech template pullout)

Top ²⁵ places to register

brides.com

SPRING/SUMMER 2011

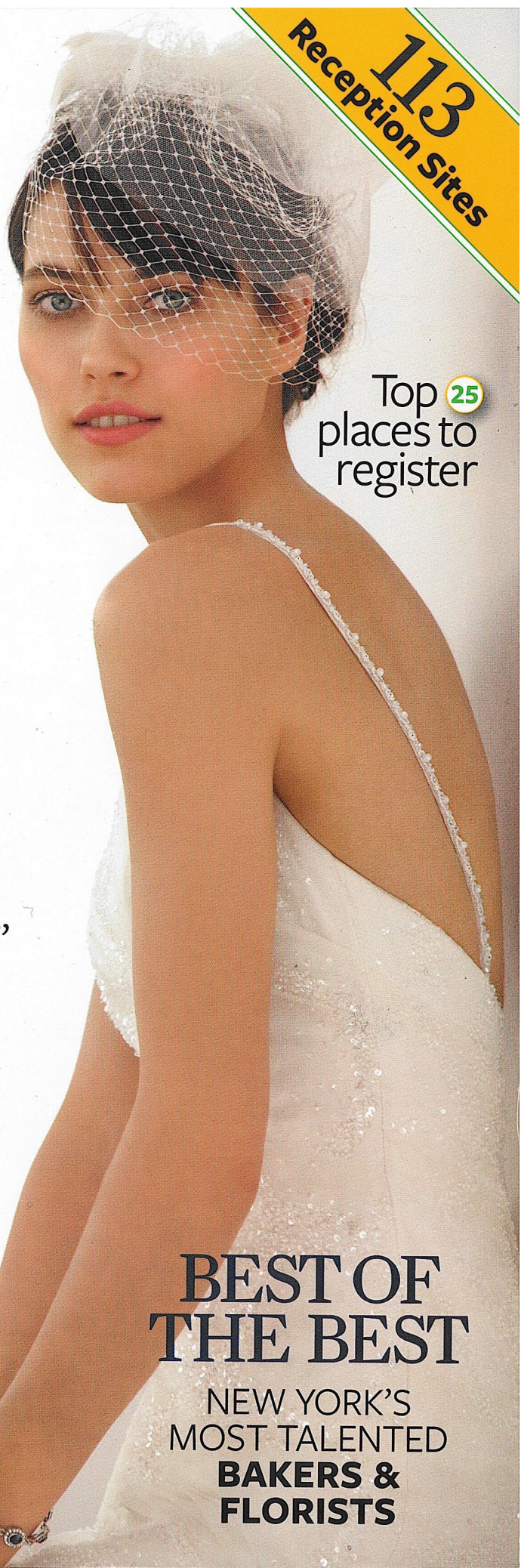
\$4.99US



0 75330 08483 9

BEST OF THE BEST

NEW YORK'S
MOST TALENTED
BAKERS & FLORISTS



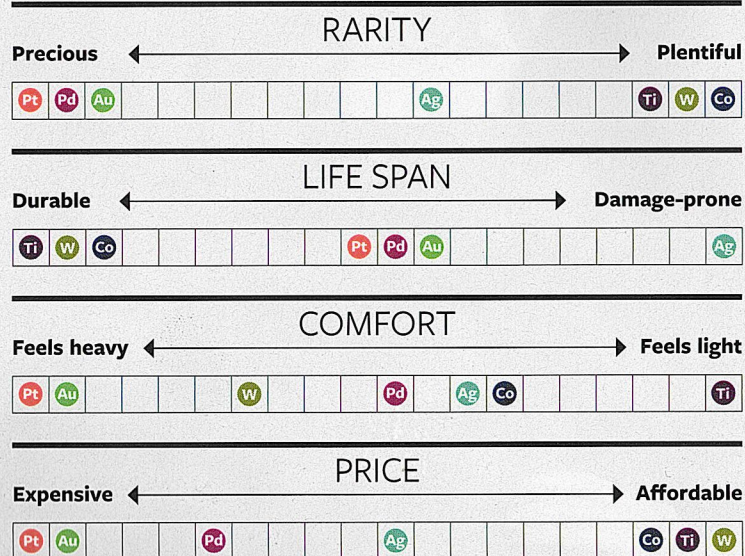
Wedding Ring Metals

Options at a Glance

Figure out what features are important to you, then choose the metal that best meets your needs.

KEY:

- Pt Platinum
- Au 14k or 18k gold
- Pd Palladium
- Ag Silver
- Ti Titanium
- W Tungsten
- Co Cobalt



Sizing Advice

"A ring fits if it slides on easily but needs a little wiggling or nudging to remove."

—Shannon Daly, Robbins Brothers

Unlike platinum, gold, and palladium bands, those made of tungsten, titanium, and cobalt cannot be resized. These metals are simply too dense, strong, and resistant to heat and pressure to withstand modification.

"Guys—if you're right-handed, you'll never get an accurate wedding band fit on that hand because your left-hand ring size is usually a half or even a full size smaller."

—Ron Samuelson, Samuelson's Diamonds

On the day of/before your shopping trip, avoid eating any foods that are high in sodium—you'll retain water, which can make fingers puffy.

Q What does it mean if a designer says she's "fair trade" or claims that her jewelry is "sustainable" and/or "conflict-free"?

A Basically, it means that the designer uses materials from regulated mines that a) protect the human rights of their workers, b) fund projects that benefit the communities in which the materials are mined, and c) use recycled materials where possible and/or take steps to preserve and maintain the environment of or around the mine sites. Any jeweler or designer claiming to subscribe to these practices should have the documentation to prove it.

FOR THE GROOM



CONTINUED